

Series 1 TiVo Bracket Instructions

(c) 2001-2003, Adberg Consulting LLC. All rights reserved.

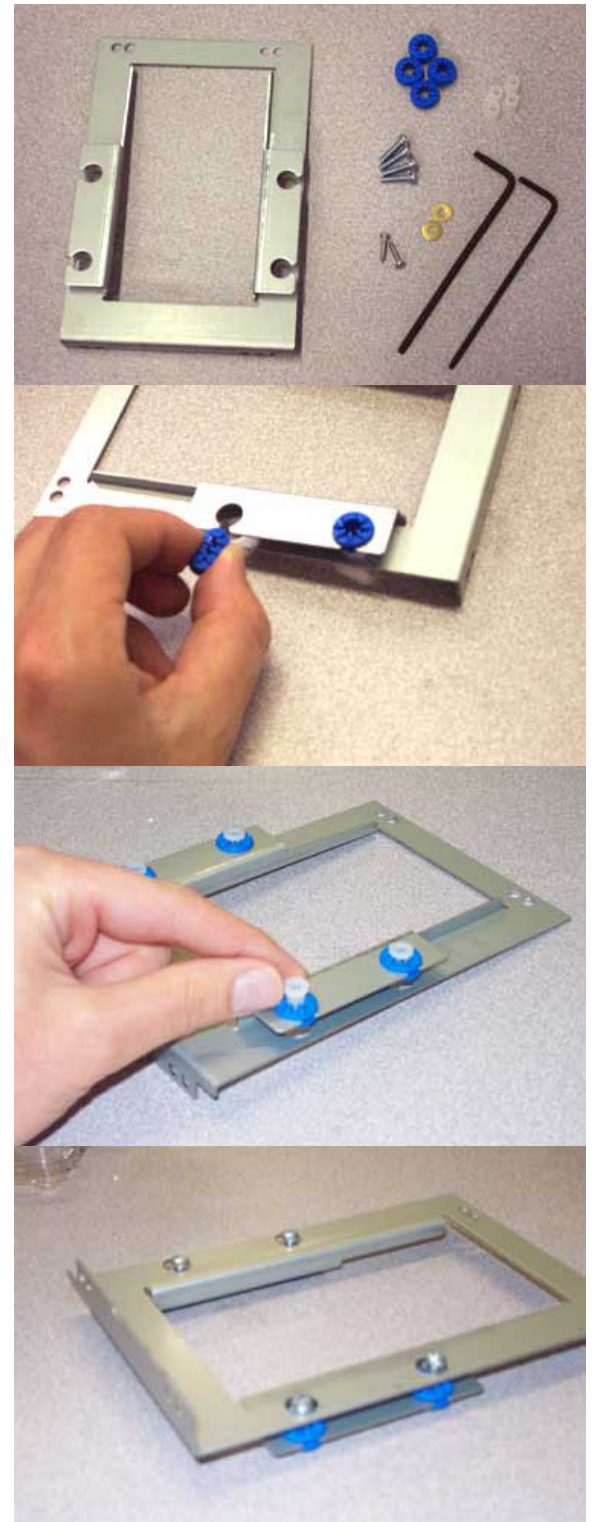
BRACKET PARTS LIST:

- (1) Bracket
- (4) Blue Rubber Grommets
- (4) White Nylon Spacers
- (4) Phillips-head Screws with Lock-Washers
- (2) Self-Tapping Screws
- (2) Flat Washers
- (2) Torx L-Keys (T-10 and T-15)

STEP 1: Insert a blue grommet into each of the four open bracket holes. To insert each grommet, squeeze it together and slide it in through the opening in each of the four holes, as shown in the picture.

STEP 2: Insert the white plastic spacers into the bracket from the top, as shown.

STEP 3: Turn the bracket over and insert the 4 Phillips-head screws with the built-in washers into each of the white spacers.



STEP 4: Align the bracket on the hard drive as shown. The ends of the four screws should align with the holes in your hard drive. Be sure to orient the drive and bracket as shown in the picture: The hard drive's IDE and power connections should be at the end of the bracket with the L-shaped bend.



STEP 5: Find the two pegs in the TiVo and install the bracket next to the other bracket (if it's still in the TiVo), being sure to get the peg through the new bracket. One peg is circled in the picture.



STEP 6: Insert a washer into the end of each of the self-tapping screw. Using the self-tapping screws and a Phillips head screwdriver, secure the bracket to the TiVo. The self-tapping screws (and washers) should be inserted into the bracket holes near the front of the TiVo. Please note that you will be cutting threads in the metal holes, so it might require a bit of force to get the screws started.

