

TIVO UPGRADE INSTRUCTIONS (#31)

(c) 2001-2004, Adberg Consulting. All rights reserved.

Instructions for ONE DRIVE REPLACEMENT for
Series 2 DirecTV DVR & TCD2X TiVo-branded Series TiVos

These instructions are available in COLOR at http://www.weaknees.com/upgrade_instructions.php

A FEW WORDS OF CAUTION:

Upgrading a TiVo presents a few physical hazards. As with most consumer electronics devices, components in the TiVo may still carry a lethal charge, even after disconnecting from your power supply. Be aware of this while working inside your TiVo. Allow sufficient time for discharging of components and avoid contact as much as possible with potential hazards. While we have done everything we can to provide accurate, easy-to-follow instructions, we cannot be responsible for any damage done to your TiVo or to yourself as a result of your upgrade. By opening your TiVo, you agree that neither Adberg Consulting nor any of its members or affiliates is responsible in any way for any harm done. Please be VERY careful when upgrading. NEVER open the TiVo while the unit is plugged in and NEVER operate the TiVo if the lid is not securely fastened. PLEASE NOTE: Opening the TiVo voids the warranty

THIS KIT INCLUDES:

- 1 T10 Torx L-Key
- 1 T15 Torx L-Key
- 1 Upgrade hard drive (not shown)
- 1 Set of upgrade instructions (not shown)



1. OPEN THE TIVO

Unplug the power cord from your electrical outlet and wait five minutes for the TiVo to discharge. Do not plug the TiVo back in until you are completely finished. Be very careful of static electricity, which can destroy your TiVo's internal parts. You should not perform this upgrade on carpet.

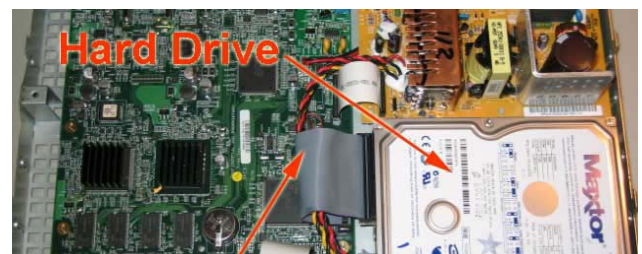
Using the Torx T10 (smaller of the two) L-key included with your kit, unscrew the four Torx screws on the back of your TiVo. The four screws are surrounded by black or gray from the top of the TiVo's case. NOTES: (1) Some newer units (those with a raised rear fan grate) have five screws holding the lid onto the case. (2) Some units have Philips-head screws (rather than Torx screws) holding the lid to the case; you will need a Philips-head screwdriver to remove those screws.

Once the four (or five) screws are removed, remove the lid. Place your palms on the top side edges of the TiVo, toward the back and push toward the back of the TiVo (this occasionally requires a bit of force). The cover should slide back and then up. Remove the cover from the TiVo.



2. DISCONNECT THE EXISTING DRIVE BAY

With the cover off and looking to the front-right of the TiVo, you will be able to see (1) one hard drive (your drive may appear different from the one pictured), (2) a gray IDE ribbon cable that runs from the greenish motherboard to the hard drive, (3) a multi-colored (red, black, yellow) drive power cable that runs from the power supply to the hard drive, and (4) two bracket screws that connect the hard drive and its bracket to the TiVo. NOTE: If you have an HR10-250 High Definition DIRECTV® DVR, the inside of your TiVo may vary, but the parts labeled in the picture will be substantially identical to those pictured.



Using your Torx screwdriver, unscrew and remove the two bracket screws that connect the hard drive bracket to the lower bracket (part of the bottom of the unit). These screws are located at the front-right of the TiVo. As you look down into the TiVo, you will see the two screw heads. Set these bracket screws aside. You will be using them again later.

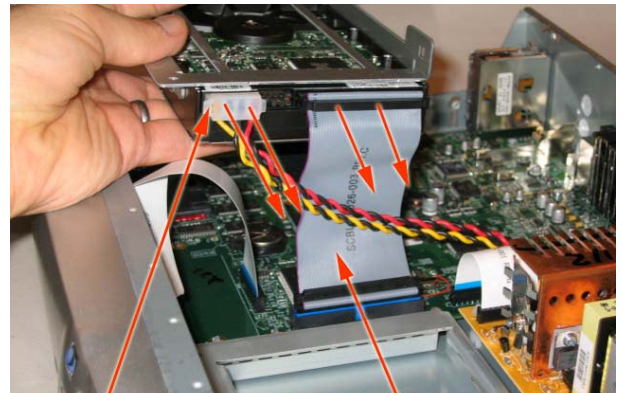
NOTE: Be very careful not to dislodge the front panel ribbon cable. If you do, simply push it back in place. NEVER power on your TiVo with this cable even slightly dislodged.

3. REMOVE THE POWER CABLE AND IDE RIBBON CABLE FROM THE DRIVE

Situate yourself in front of the TiVo. With your left hand, push the drive/bracket back slightly toward the power supply and then turn it upside down, rotating it to the left, as shown in the picture at the right.

While holding the drive bracket in your left hand (being careful not to touch the components on the drive itself), use your right hand to remove the power cable and IDE cable from the hard drive. These can sometimes stick, so you might have to wiggle the power cable a bit. NOTE: If this method of removing the cables is difficult for you, you can instead remove the cables at the end of step 2. However, you MUST be VERY CAREFUL of the front panel ribbon cable. If this cable is dislodged even slightly and you power on your TiVo. You can cause permanent damage.

Leave the other end of the IDE ribbon cable connected to the TiVo.



Drive Power Cable IDE Ribbon Cable

4. REMOVE THE EXISTING DRIVE

Take note of the direction of the drive that you are removing from the bracket. You will be installing the new drive onto the bracket in the same direction.

Unscrew the four Torx screws that connect the hard drive to the hard drive bracket. Keep these four drive screws handy; you will re-use them in the next step.

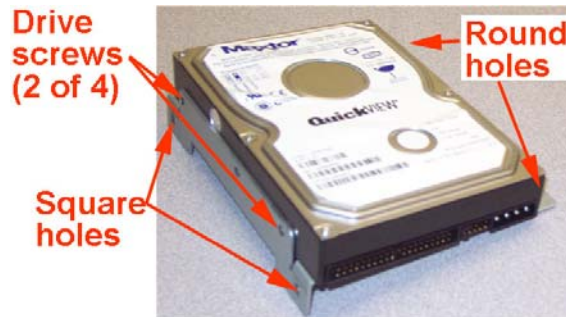
Note: Your factory drive may appear different than the one pictured.



Four Drive Screws

5. CONNECT THE NEW HARD DRIVE TO THE DRIVE BRACKET

Using the four screws you just removed from the factory drive and bracket, connect the new drive to the drive bracket. Be sure to orient the drive as shown in the picture.



Drive screws (2 of 4)

Round holes

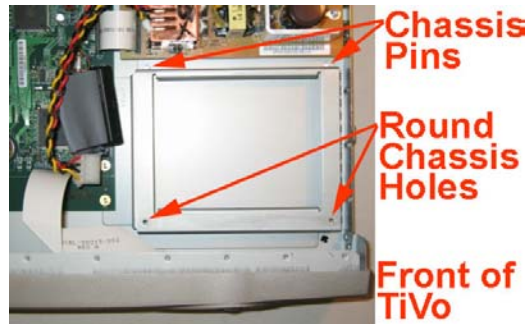
Square holes

6. INSTALL THE HARD DRIVE AND BRACKET BACK INTO THE TIVO

Orient yourself in front of the TiVo, with the power supply in the back-rear of the TiVo. Pick up the bracket so that the drive connectors are facing left and the drive label is facing up.

Install the drive bracket into the TiVo so that the pins in the TiVo chassis fit inside the **square** open holes in the bracket. Then slide the bracket toward the front of the TiVo. If the drive bracket is installed properly, the two **round** open holes in the bracket will align with the round holes in the TiVo chassis.

Secure the bracket to the TiVo using the bracket screws you removed in Step 2.



7. ATTACH THE IDE CABLE AND POWER CABLE

Once the bracket and new drive are installed, attach the IDE ribbon cable and power cable to the drive. The IDE ribbon cable attaches to the drive with the notch in the cable facing up. The power cable connector should be installed with the rounded side facing up. Again, be careful not to jar or dislodge the front-panel ribbon cable.



Power cable (rounded side up) IDE cable (notch up)

8. RE-ATTACHING THE TIVO LID

Place the TiVo lid back over the TiVo with the back of the lid overhanging the TiVo by about three-quarters of an inch. At the same time, align the clips on each side of the lid so that they clip down on the sides of your TiVo. Slide the lid toward you while simultaneously pushing down on the top of the lid. Once the lid is in place, reattach the four (or five) screws. Plug in your TiVo and enjoy!

NOTE: When you first start your TiVo, you will see a note saying "Clearing and Deleting Everything. This will take an Hour." This is normal, and will actually take only 10 minutes or so. Once you have gone through the setup process, you can confirm your added capacity in the System Information screen. If you have a DirecTV/TiVo and your TiVo sticks at 28% when first loading the satellite data, please see our home page for the solution.



We thank you very much for your purchase and hope that you enjoy your newly-enhanced TiVo. Please [email us](#) with any comments, suggestions or complaints. If you found the upgrade easy to install (or even if you found it more difficult than you expected), we'd love to know. If you found our service to be excellent (or awful), we want to know that too. We're always looking to improve our products and services...the more we hear from you, the better. Thanks very much!